

Quectel Windows USB Driver(A) Installation Guide

LTE Standard Products

Version: 1.1

Date: 2026-04-24

Status: Released



At Quectel, our aim is to provide timely and comprehensive services to our customers. If you require any assistance, please contact our headquarters:

Quectel Wireless Solutions Co., Ltd.

No. 8 Waipojing Road, Sijing Town, Songjiang District, Shanghai 201601, China

Tel: +86 21 5108 6236

Email: info@quectel.com

Or our local offices. For more information, please visit:

<https://www.quectel.com/contact/>.

For technical support, or to report documentation errors, please visit:

<https://www.quectel.com/tech-support/>.

Or email us at: support@quectel.com.

Legal Notices

We provide this document to support your product design. You are required to design your products based on the specifications and parameters set forth herein. You agree that you are responsible for using independent analysis and evaluation in designing intended products, and we provide reference designs for illustrative purposes only. Before using any hardware, software or service guided by this document, please read this notice carefully. Even though we employ commercially reasonable efforts to provide the best possible experience, you hereby acknowledge and agree that this document and related services hereunder are provided to you on an “as available” basis. You acknowledge and agree that we may add to, amend, or restate this document at any time at our sole discretion without any prior notice to you, and such additions, amendments, or restatements shall be binding upon you.

Use and Disclosure Restrictions

License Agreements

The recipient of any hardware, software, materials, or documentation provided by us shall keep such content confidential, unless expressly authorized by us. The recipient shall not disclose, access, or use any part of the received content for any purpose other than the execution and implementation of the intended project.

Copyright

Our and third-party products hereunder may contain copyrighted materials, including but not limited to protected content, hardware, software, and documentation owned by us or applicable third parties. Unless prior written consent is obtained, you shall not access, use, or disclose any documents or information provided by us, nor shall you copy, reproduce, republish, display, translate, distribute, merge, modify, or create derivative works from any such copyrighted materials. We and the applicable third party retain exclusive rights to all copyrighted materials. No license to any patents, copyrights, trademarks, or service marks shall be granted or transferred. For the avoidance of doubt, no form of purchase shall be construed as granting any license beyond a normal, non-exclusive, royalty-free license to use the product. We reserve the right to pursue legal action against any violation of confidentiality obligations, unauthorized

use, or any other unlawful or malicious use of the aforementioned documents and information.

Trademarks

Unless otherwise expressly provided, nothing in this document shall be construed as conferring any rights to use any trademark, trade name, name, abbreviation, or counterfeit thereof owned by us or any third party in advertising, publicity, or any other contexts.

Third-Party Rights

You understand that this document may refer to hardware, software, and/or documentation owned by one or more third parties (“third-party materials”). Use of such third-party materials is subject to all applicable restrictions and obligations set forth herein.

We make no warranty or representation, either express or implied, regarding the third-party materials, including but not limited to any implied or statutory, warranties of merchantability or fitness for a particular purpose, quiet enjoyment, system integration, information accuracy, and non-infringement of any third-party intellectual property rights with regard to the licensed technology or use thereof. Nothing herein constitutes a representation or warranty by us to either develop, enhance, modify, distribute, market, sell, offer for sale, or otherwise maintain production of any our products or any other hardware, software, device, tool, information, or product. We moreover disclaim any and all warranties arising from the course of dealing, course of performance, or usage of trade.

Privacy Policy

To enable product functionality, certain device data may be uploaded to our or third-party servers, including those operated by carriers, chipset suppliers, or servers designated by you. We strictly comply with applicable laws and regulations and will retain, use, disclose, or otherwise process relevant data solely for the purpose of enabling product functionality, or as permitted by applicable laws. Before interacting with any third party regarding data exchange, please be informed of and understand their privacy and data security policies.

Disclaimer

- a) We shall not be liable for any damages resulting from failure to comply with applicable operational or design specifications.
- b) We shall bear no liability for any inaccuracies or omissions in this document, nor for any damages arising from the use of the information contained herein.
- c) While we make every effort to ensure the integrity, accuracy, and timeliness of the features and functions under development, errors or omissions may nevertheless occur. Unless otherwise provided in a valid written agreement, we make no warranties of any kind, express, implied, or statutory, and disclaim all liability for any loss or damage arising from the use of any features or functions under development, to the maximum extent permitted by law, regardless of whether such loss or damage is foreseeable.
- d) We assume no legal responsibility for the accessibility, safety, accuracy, availability, legality, or completeness of any information, content, advertising, commercial offers, products, services, or materials on third-party websites or third-party resources.

Copyright © Quectel Wireless Solutions Co., Ltd. 2026. All rights reserved.

About the Document

Revision History

Version	Date	Author	Description
-	2022-06-28	Freddy Wu	Creation of the document
1.0	2023-01-30	Freddy Wu	First official release
1.1	2026-04-24	Sun Xia	<ol style="list-style-type: none">Omitted the model suffixes of module names that contain 3 digits.Updated the following applicable modules:<ul style="list-style-type: none">Added applicable modules EC600M, EC800M and EG810M.Deleted EOL products EG912Y, EC200S and EG060V.

Contents

About the Document	3
Contents	4
Table Index.....	5
Figure Index	6
1 Introduction	7
1.1. Applicable Modules	7
2 Install USB Driver.....	8
2.1. Preparation.....	8
2.2. Installation Procedure.....	9
2.3. Test.....	14
3 Uninstall USB Driver	16
4 Appendix References	20

Table Index

Table 1: Applicable Modules.....	7
Table 2: Related Document.....	20
Table 3: Terms and Abbreviations	20

Figure Index

Figure 1: “Device Manager” Interface Without Any Quectel USB Driver Installed	9
Figure 2: Preparing to Install	10
Figure 3: Default Destination Location.....	11
Figure 4: Change Destination Location.....	11
Figure 5: Start Copying Files.....	12
Figure 6: Automatic Installation	13
Figure 7: Complete Installation	13
Figure 8: “Device Manager” Interface with USB Driver Installed.....	14
Figure 9: Test Module via QCOM.....	15
Figure 10: Select “Remove” to Uninstall Driver	16
Figure 11: Confirm Uninstallation	17
Figure 12: Complete Uninstallation	18
Figure 13: “Device Manager” Interface with USB Driver Uninstalled	19

1 Introduction

Quectel provides a USB driver installation package (Quectel_Windows_USB_Driver(A)_Customer), which supports Windows 7 and Windows 10 operating systems. This document takes Windows 10 system as an example, and mainly introduces how to install and uninstall the USB driver for the Quectel LTE Standard module in the Windows operating system.

1.1. Applicable Modules

Table 1: Applicable Modules

Product Line	Module
LTE Standard	EC200A
	EC600M
	EC800M
	EG810M
	EG912N

NOTE

Quectel modules listed above may include only a single model or multiple models. See the corresponding module specifications for more specific information.

2 Install USB Driver

This chapter describes how to install a Quectel USB driver with the provided installation package.

2.1. Preparation

The USB driver can be installed to the system before or after connecting the module to the PC with the USB cable. Before installing the USB driver, please contact Quectel Technical Support to obtain the latest driver installation package.

If you have never installed any Quectel USB driver on your system before, a system prompt will indicate that the drivers of the new devices need to be updated and you can ignore the prompt and begin to install the Quectel USB driver.

The “Computer Management” → “Device Manager” interface of the Windows system in the figure below indicate that the Quectel USB driver has not been installed in the system.

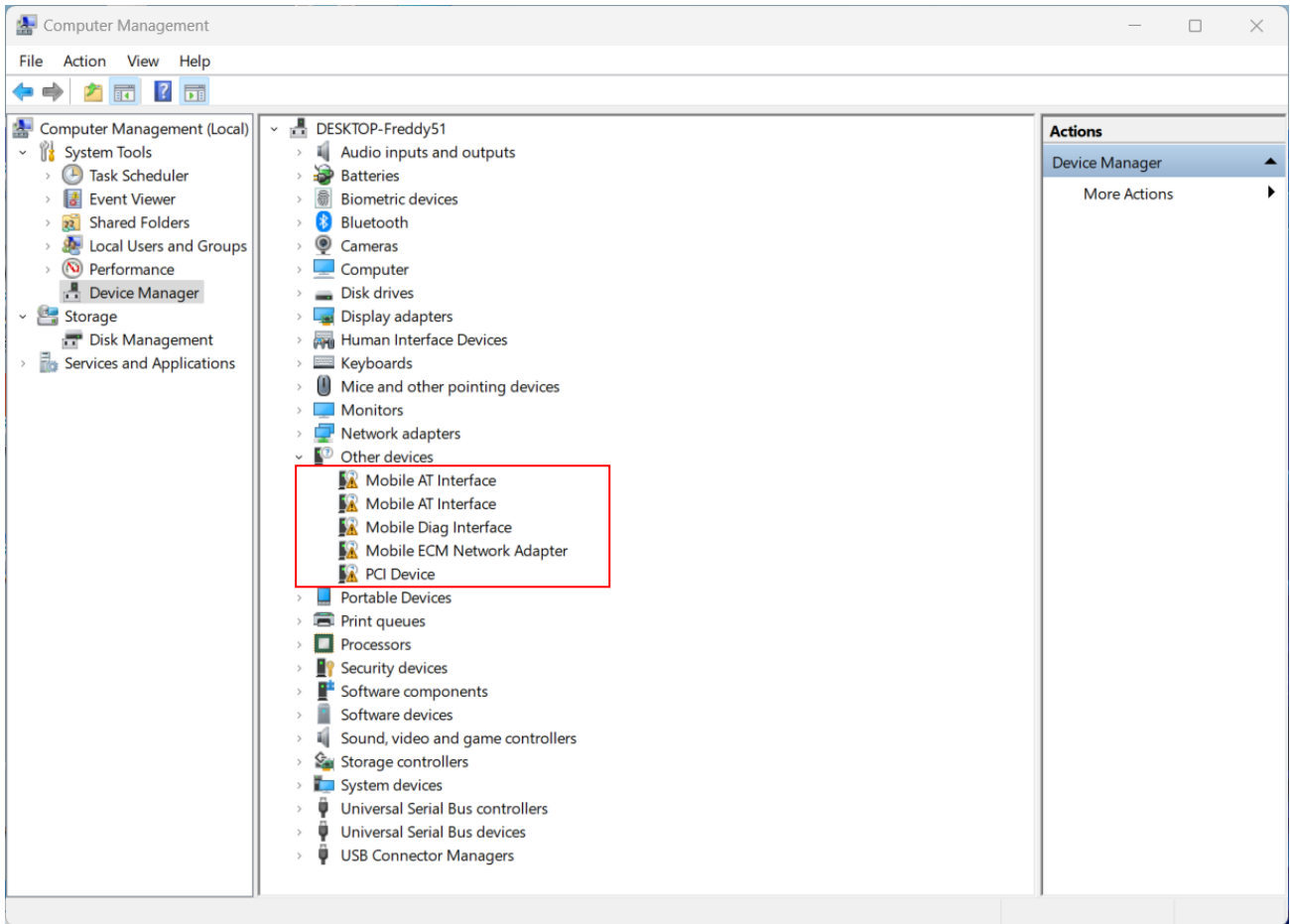


Figure 1: “Device Manager” Interface Without Any Quectel USB Driver Installed

2.2. Installation Procedure

This document outlines the installation of *Quectel_Windows_USB_Driver(A)_Customer_V1.0* in the examples below.

1. Run InstallShield Wizard

Double click the *setup.exe* file in the installation package to run the InstallShield Wizard and the “Preparing to Install” window will appear.

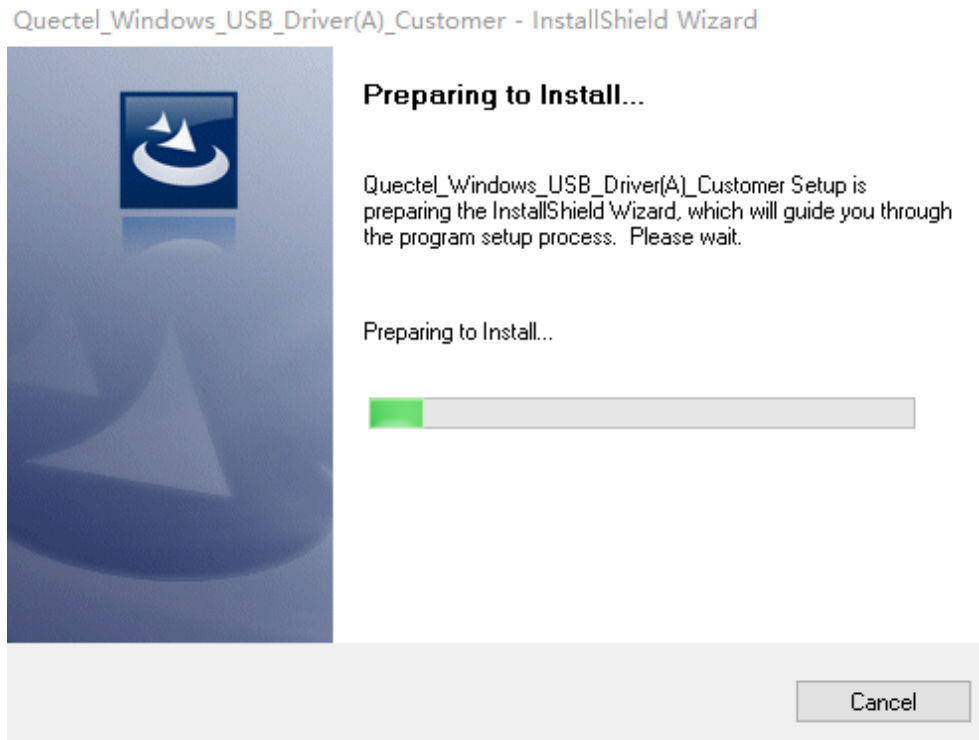


Figure 2: Preparing to Install

Once the InstallShield Wizard is ready, “Choose Destination Location” window will appear on the screen.

2. Choose Destination Location

If you do not want to change the default location for Quectel USB driver installation, click “**Next >**” to proceed to the next step.

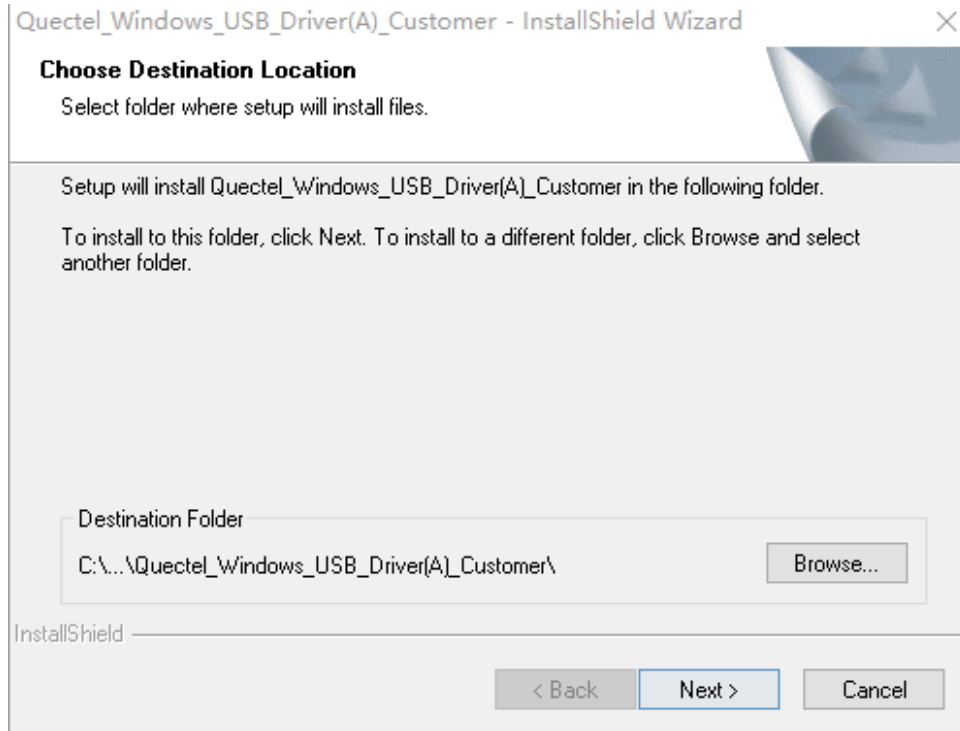


Figure 3: Default Destination Location

If you want to change the location for Quectel USB driver installation, click “**Browse...**” to enter the “Choose Folder” window. You can select the destination location and click “**OK**” to save the configuration. The interface will return to “Choose Destination Location” window and you can click “**Next >**” to continue the installation.

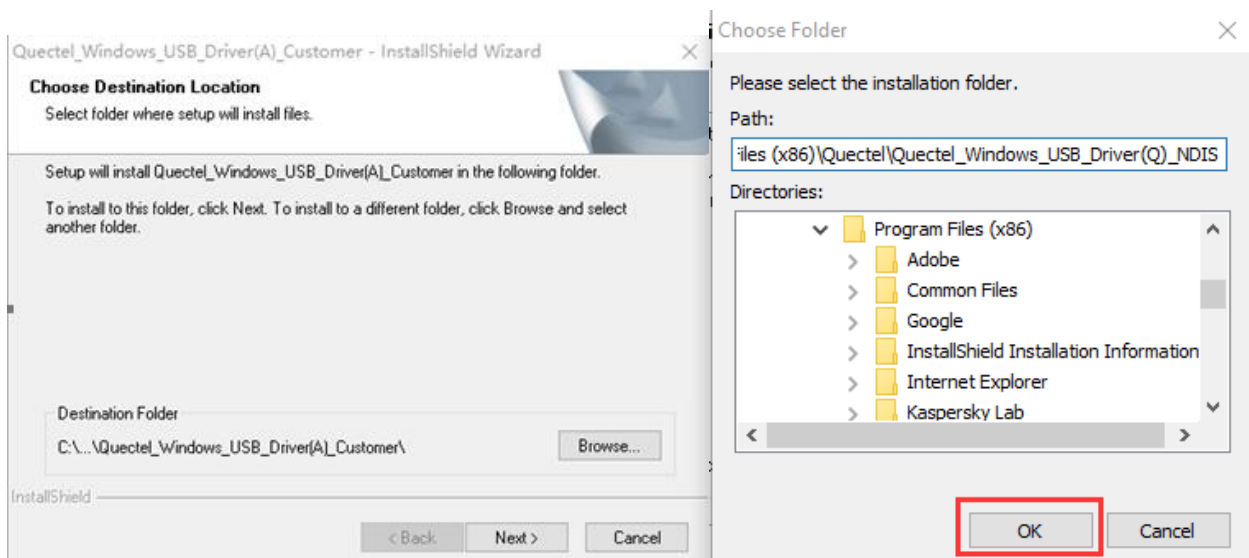


Figure 4: Change Destination Location

3. Copy the Program Files Needed for Installation

When the following window appears, click “**Next >**” to proceed to the next step.

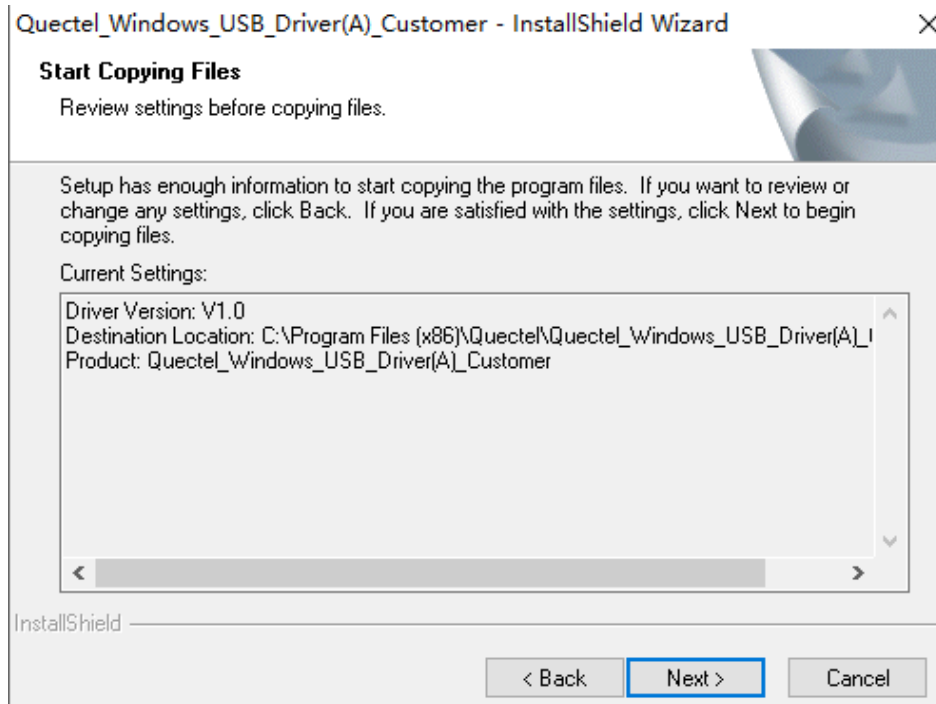


Figure 5: Start Copying Files

4. Automatic Installation

Driver installation starts automatically once file copying is completed. It may take some time to install the driver, please wait patiently for the process to complete.

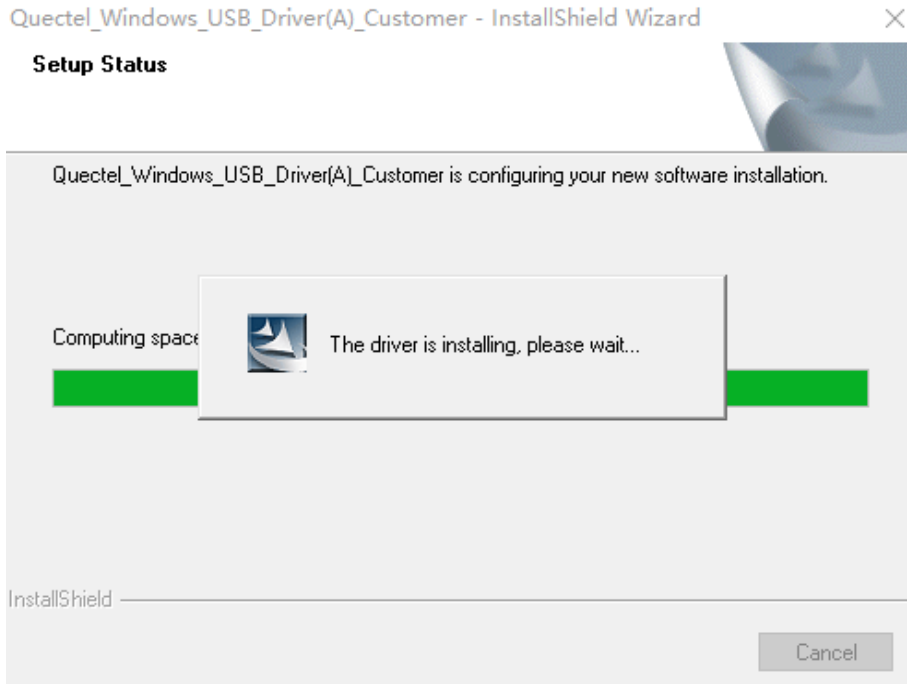


Figure 6: Automatic Installation

5. Complete Installation

When the following window appears, it indicates that the Quectel USB driver has been successfully installed. Click “**Finish**” to complete the installation.

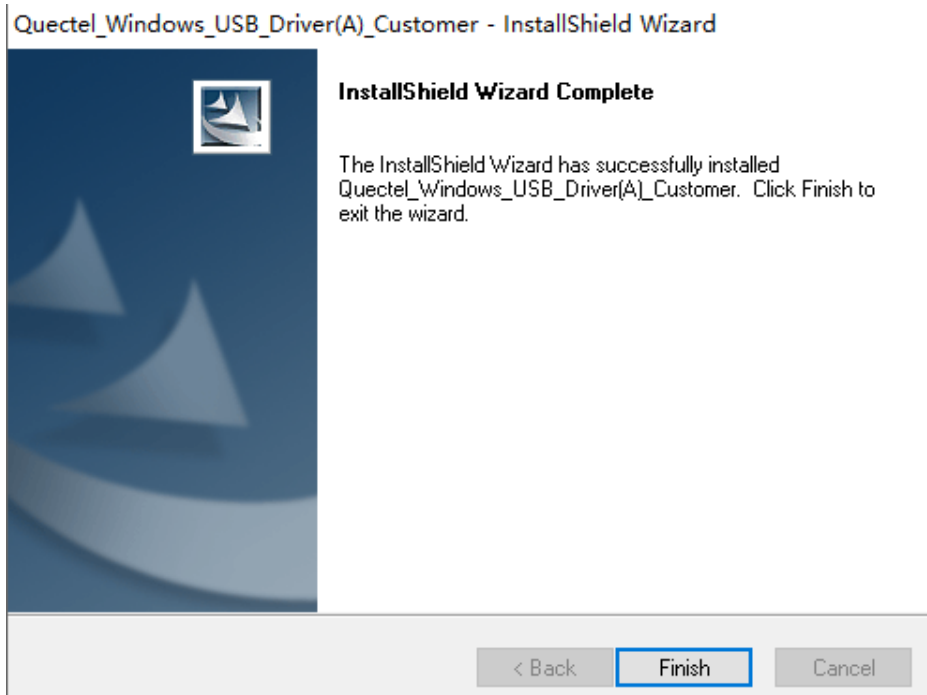


Figure 7: Complete Installation

You can check the installation result through “Computer Management” → “Device Manager”. The following “Device Manager” interface will appear after a successful driver installation.

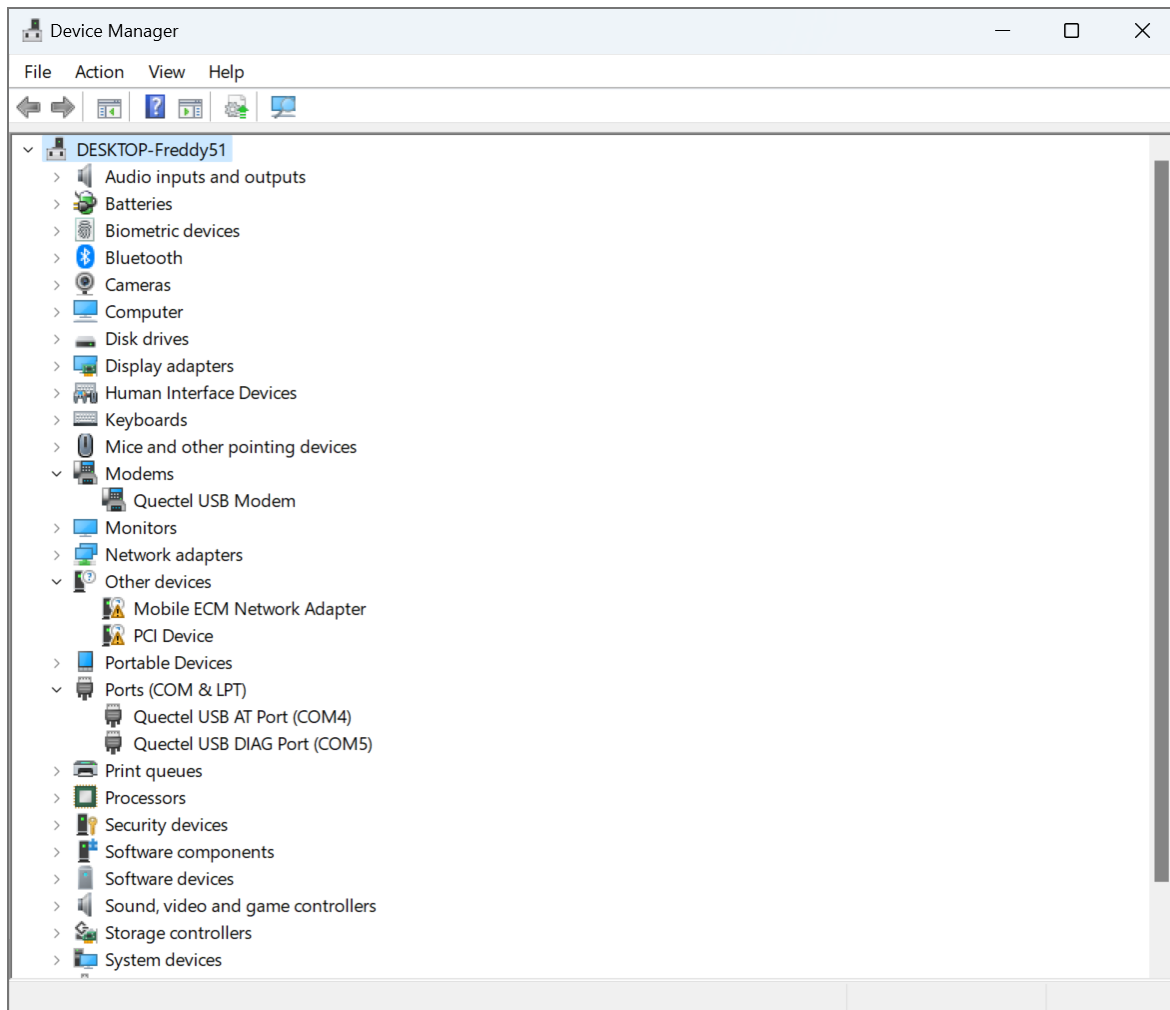



Figure 8: “Device Manager” Interface with USB Driver Installed

2.3. Test

Once the Quectel USB driver is installed, you can test whether it works normally via QCOM. For detailed steps, see **document [1]**.

For example, open the QCOM tool, open the COM port corresponding to the USB AT port (take COM4 as an example), input the AT command and send it, if the AT command responds successfully, it proves that the USB driver can work normally. The details are shown in the figure below.

 QCOM_V1.6

About

COM Port Setting

COM Port: <input type="text" value="4"/>	Baudrate: <input type="text" value="115200"/>	StopBits: <input type="text" value="1"/>	Parity: <input type="text" value="None"/>
ByteSize: <input type="text" value="8"/>	Flow Control: <input type="text" value="No Ctrl Flow"/>	<input type="button" value="Close Port"/>	

```
[2020-12-01_21:25:04:220]AT+CFUN?  
[2020-12-01_21:25:04:220]+CFUN: 1  
  
[2020-12-01_21:25:04:220]OK
```

Figure 9: Test Module via QCOM

3 Uninstall USB Driver

This chapter takes *Quectel_Windows_USB_Driver(A)_Customer_V1.0* as an example to mainly introduce how to uninstall the USB driver. You can uninstall the driver by re-operating the installation package, the detailed steps are as follows.

1. Open Driver Package

If the driver is installed successfully, open the driver package and the window below will appear on the screen, and then select **“Remove”**.

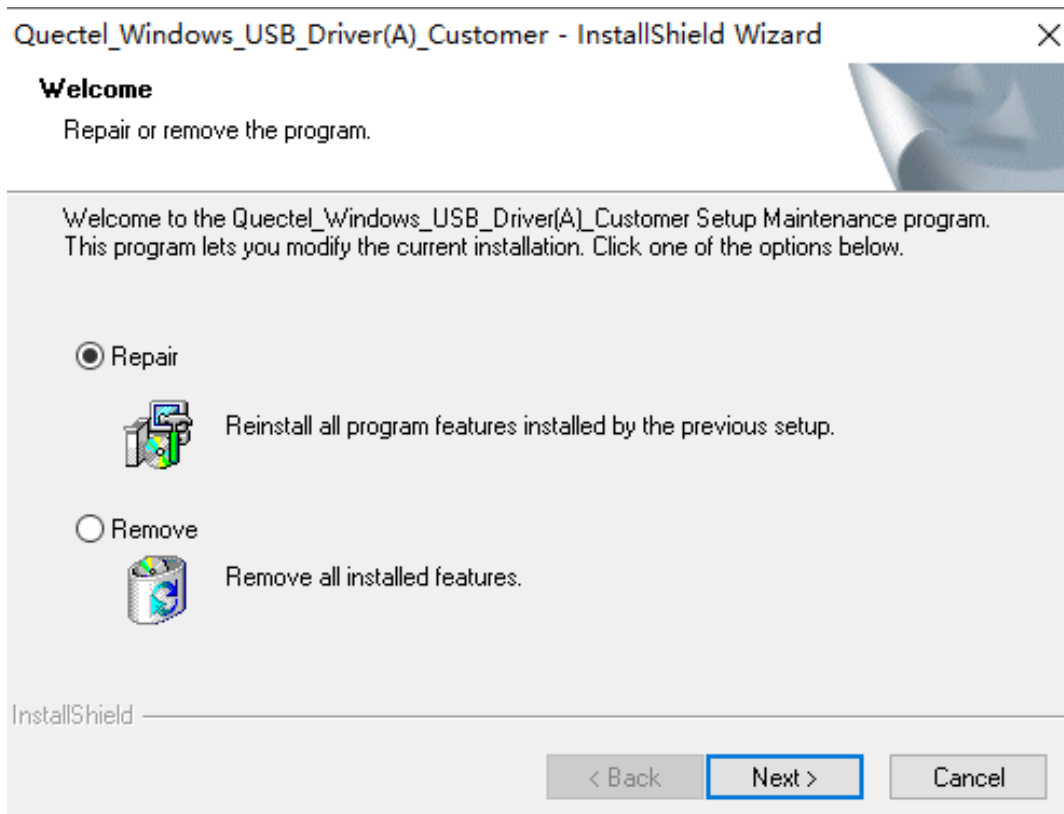


Figure 10: Select “Remove” to Uninstall Driver

2. Confirm to Uninstall

Click “**Next >**” and then click “**Yes**” in the popup window to confirm and start uninstalling the driver.

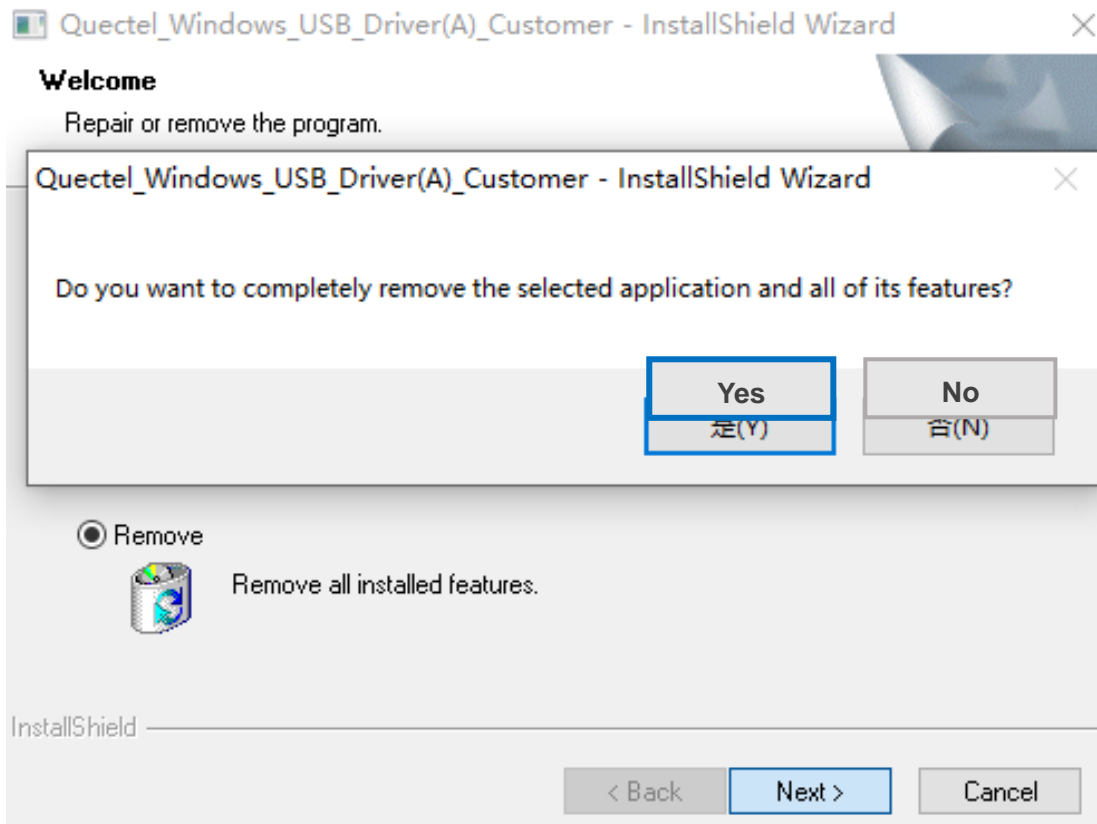


Figure 11: Confirm Uninstallation

3. Complete Uninstallation

When the following window appears, it indicates that the driver has been uninstalled successfully. Click “**Finish**” to complete uninstallation.

Quectel_Windows_USB_Driver(A)_Customer - InstallShield Wizard

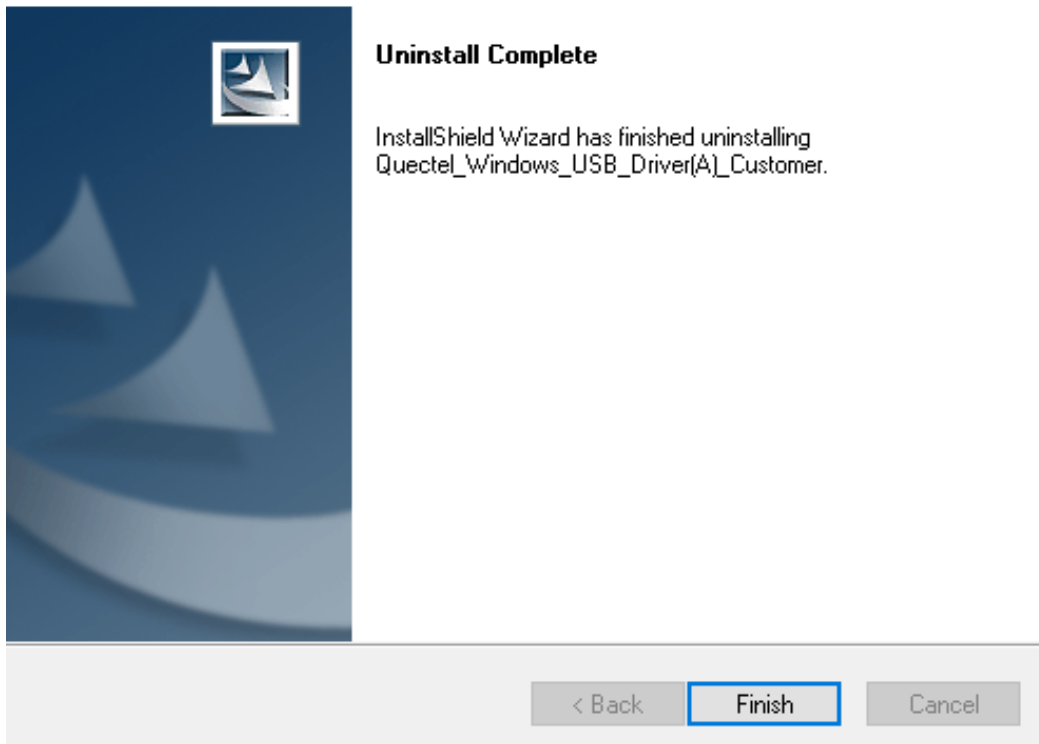


Figure 12: Complete Uninstallation

4. Check Uninstallation Result

Once the Quectel USB driver is successfully uninstalled, the device will switch to uninstalled status. You can check the uninstallation result through "Computer Management" → "Device Manager". The following "Device Manager" interface will appear after a successful driver uninstallation.

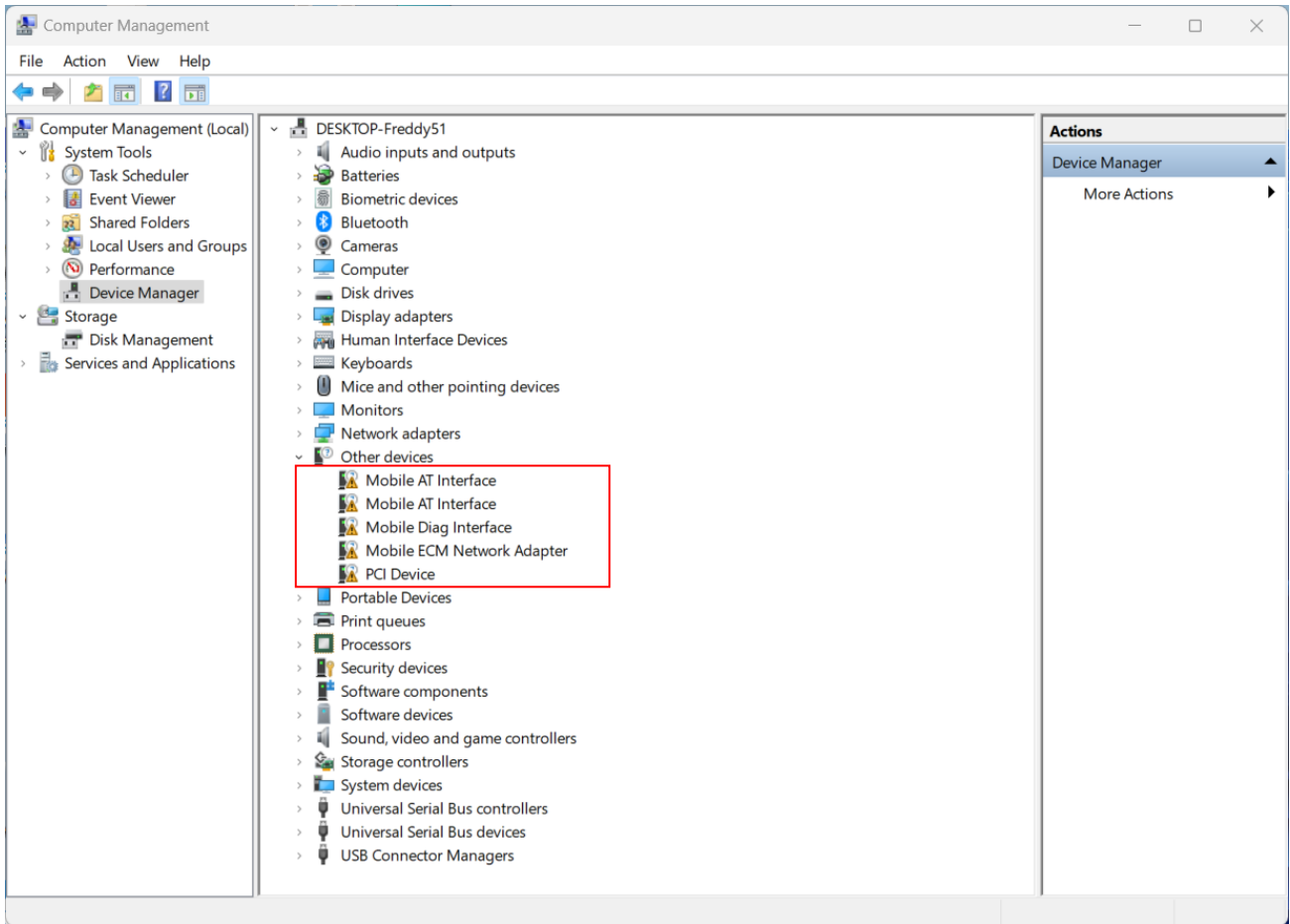


Figure 13: “Device Manager” Interface with USB Driver Uninstalled

4 Appendix References

Table 2: Related Document

Document Name
[1] Quectel_QCOM_User_Guide

Table 3: Terms and Abbreviations

Abbreviation	Description
LTE	Long-Term Evolution
PC	Personal Computer
USB	Universal Serial Bus